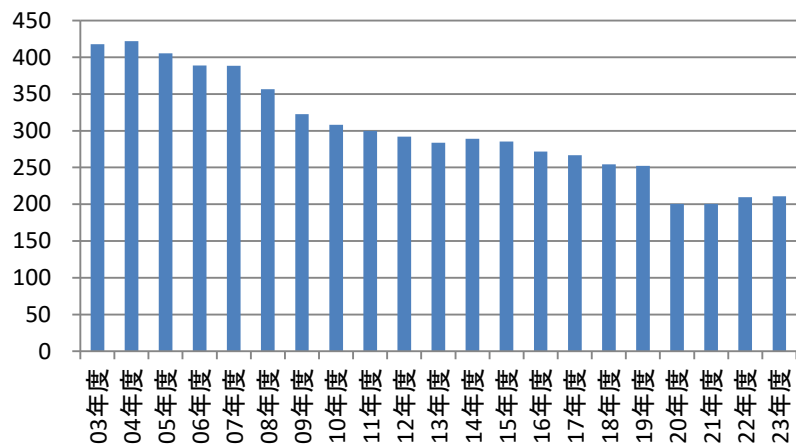
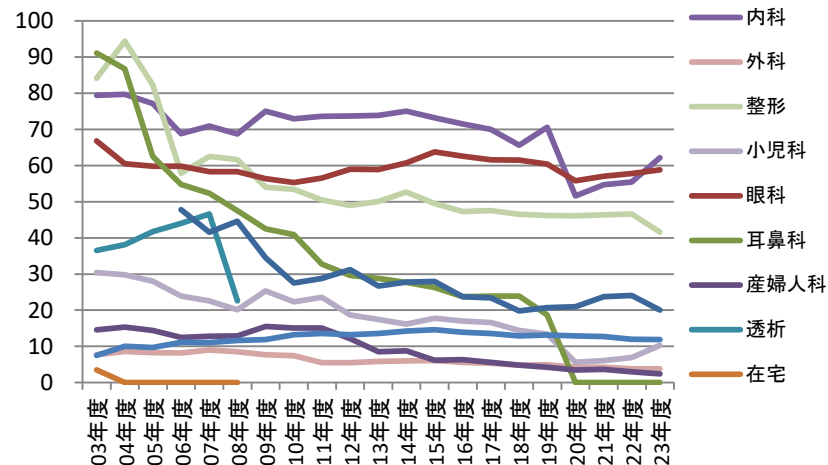


# 鹿児島生協病院・谷山生協クリニック 診療データ 2023年度まで

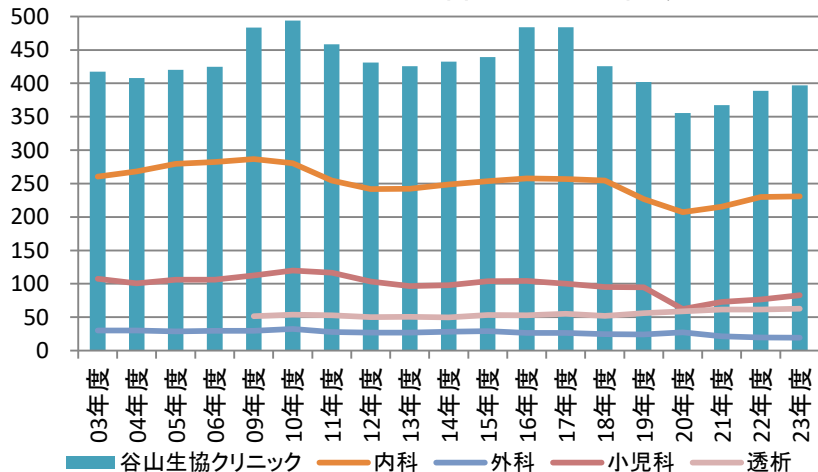
## 鹿児島生協病院 外来患者数



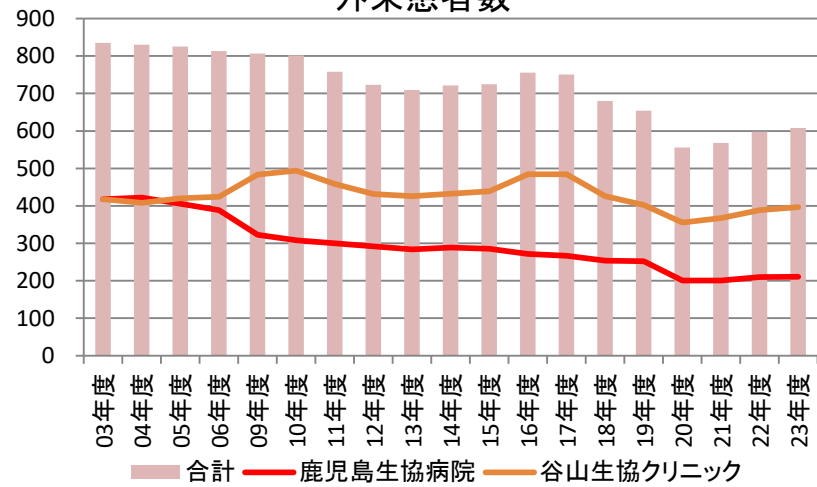
## 鹿児島生協病院 科別外来患者数

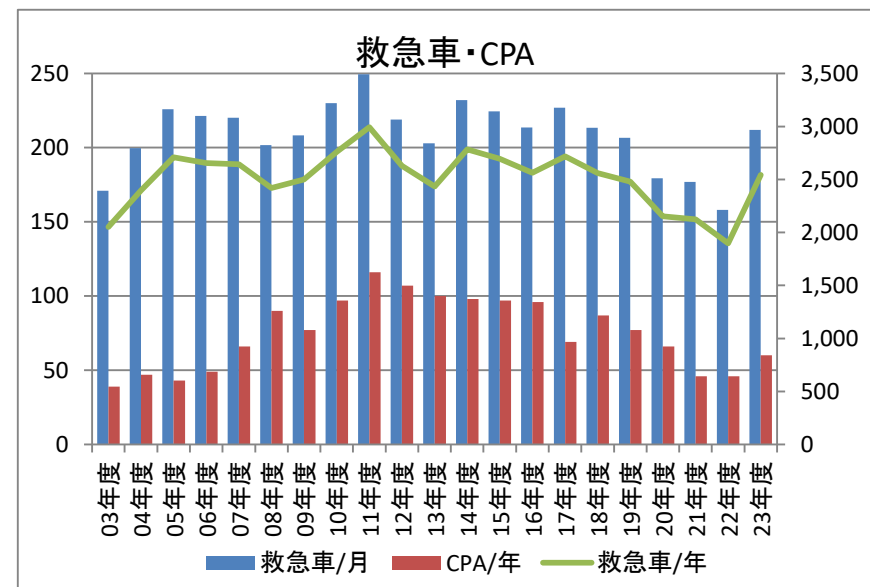
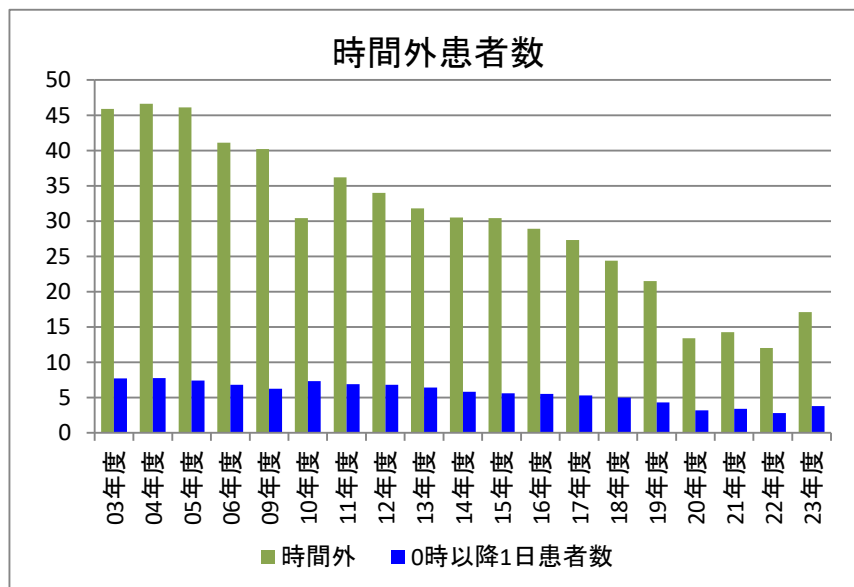
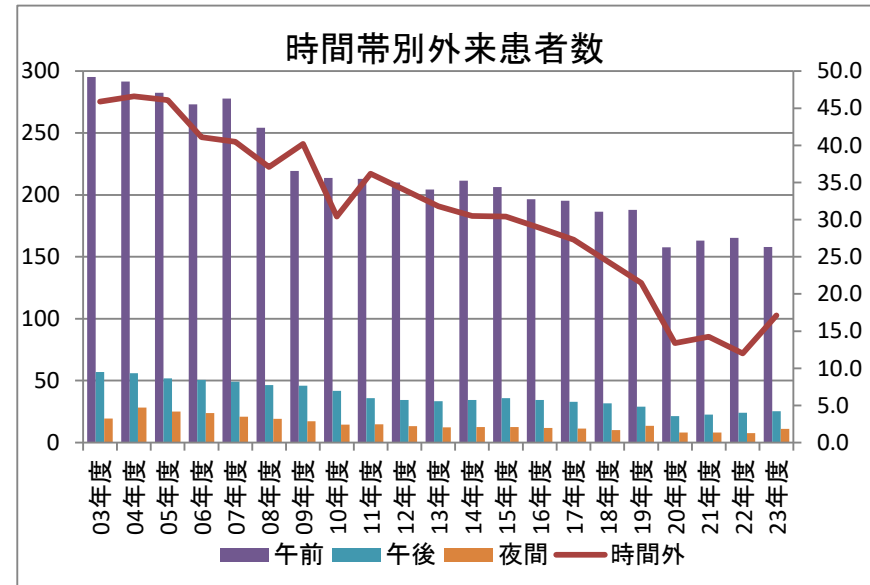
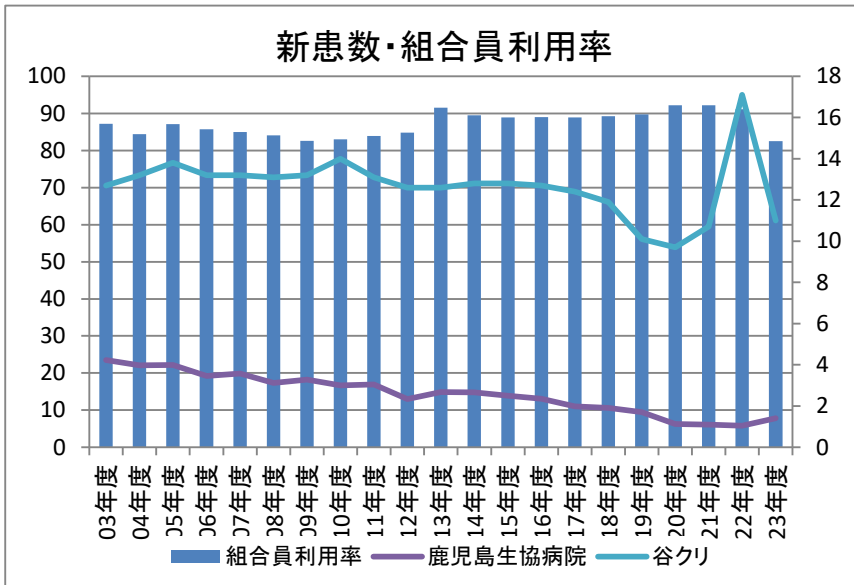


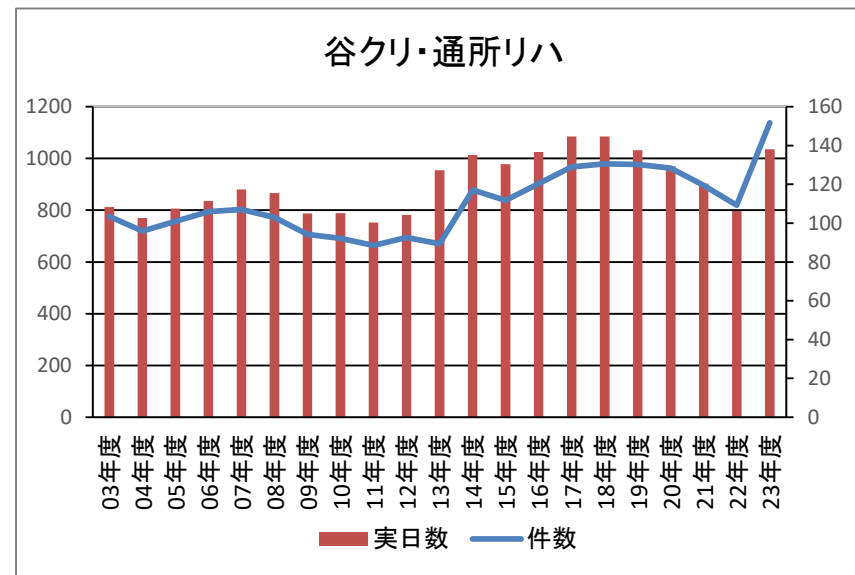
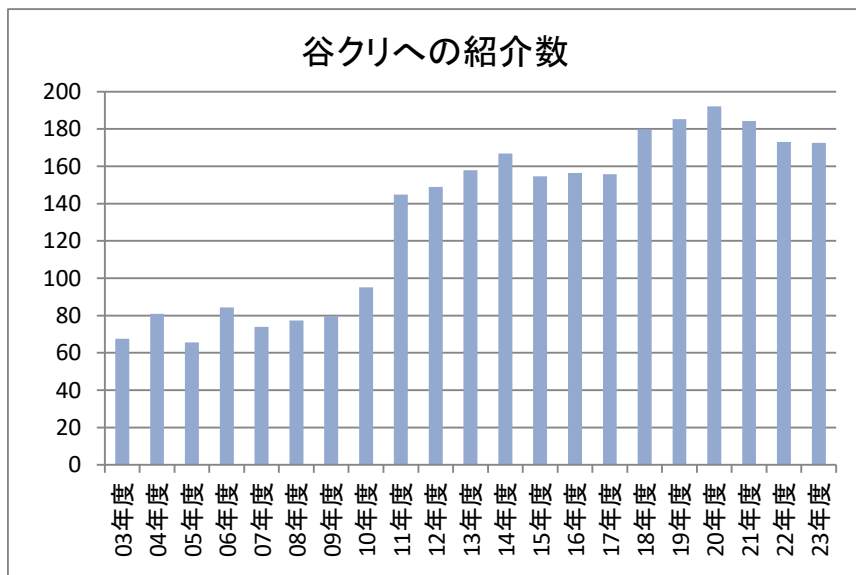
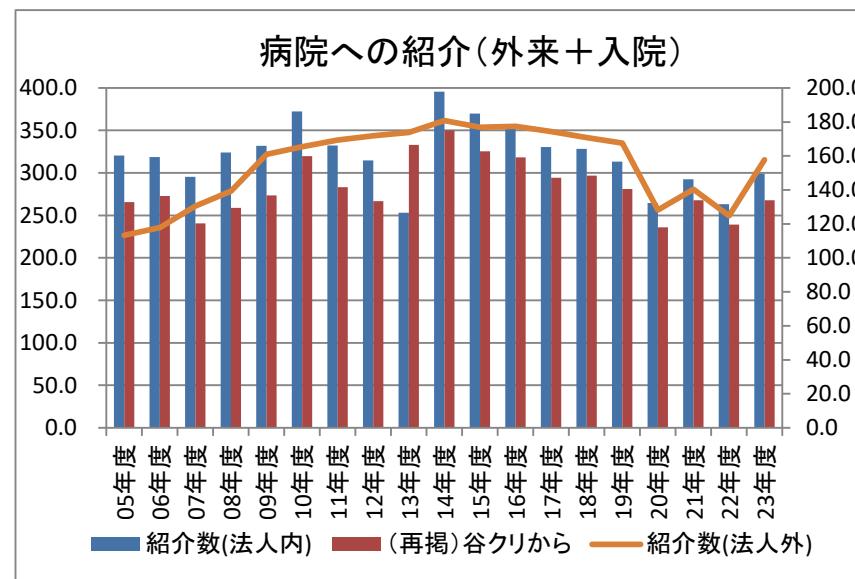
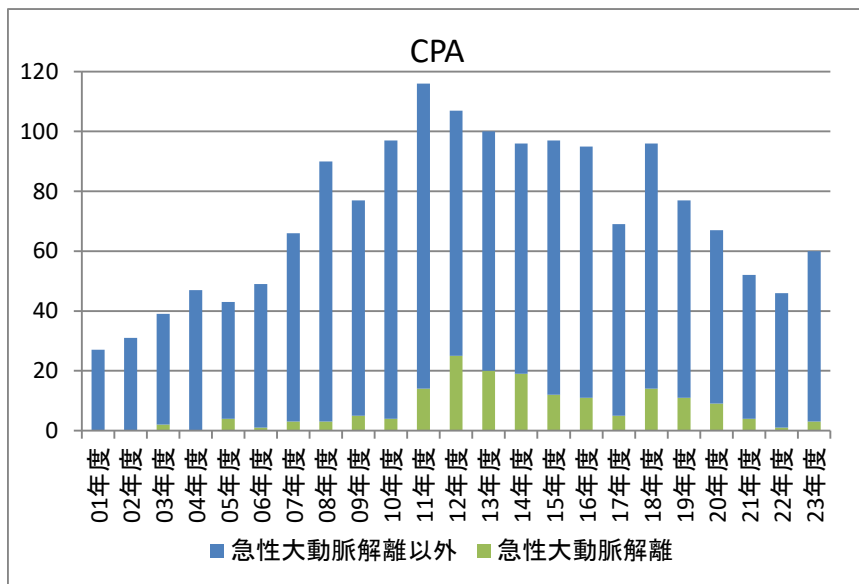
## 谷山生協クリニック 科別外来患者数

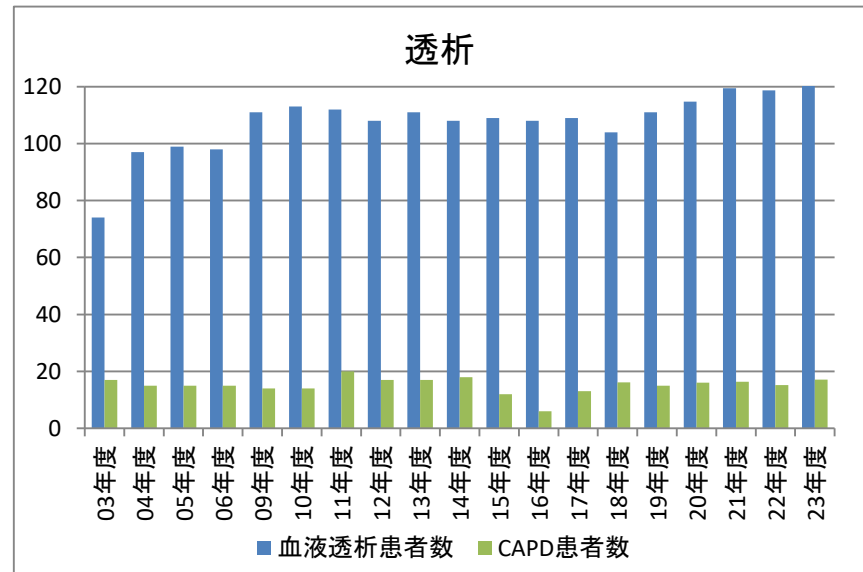
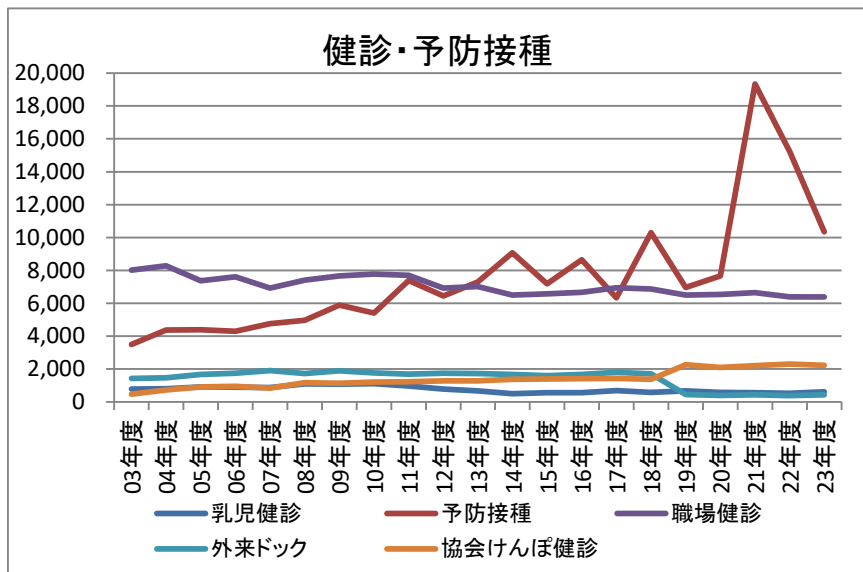


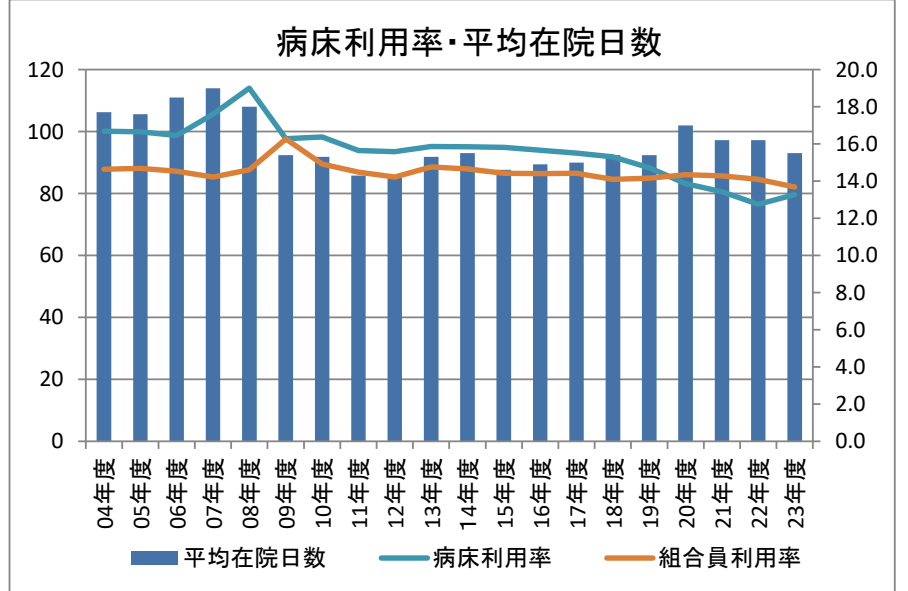
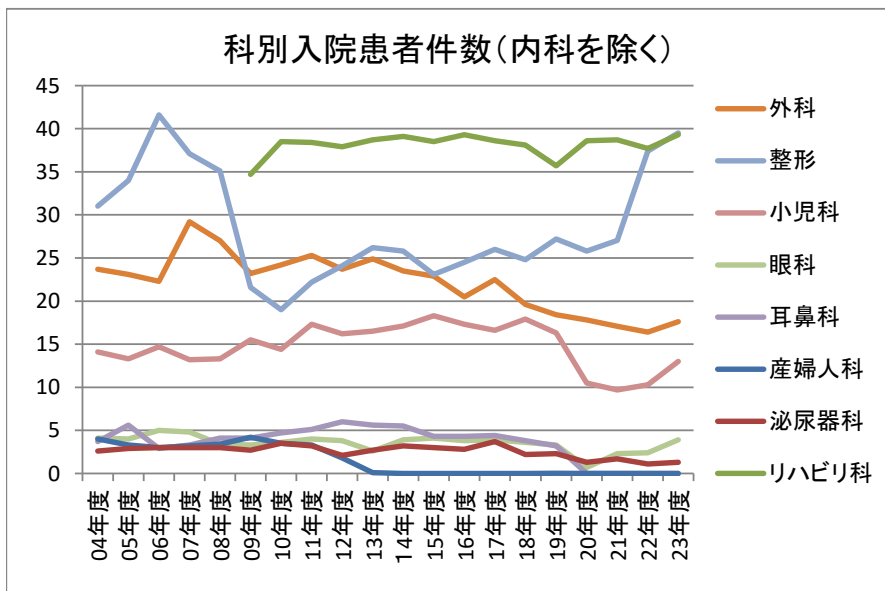
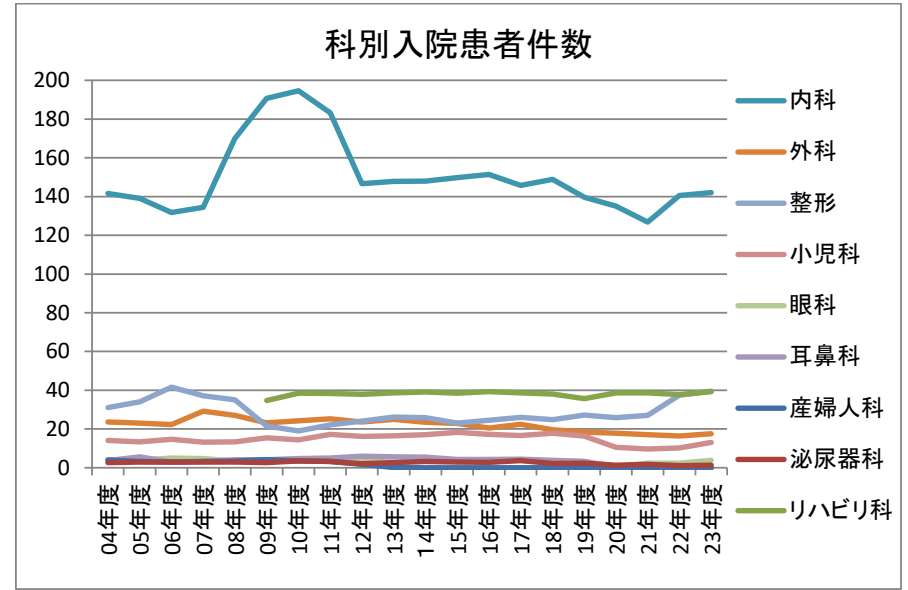
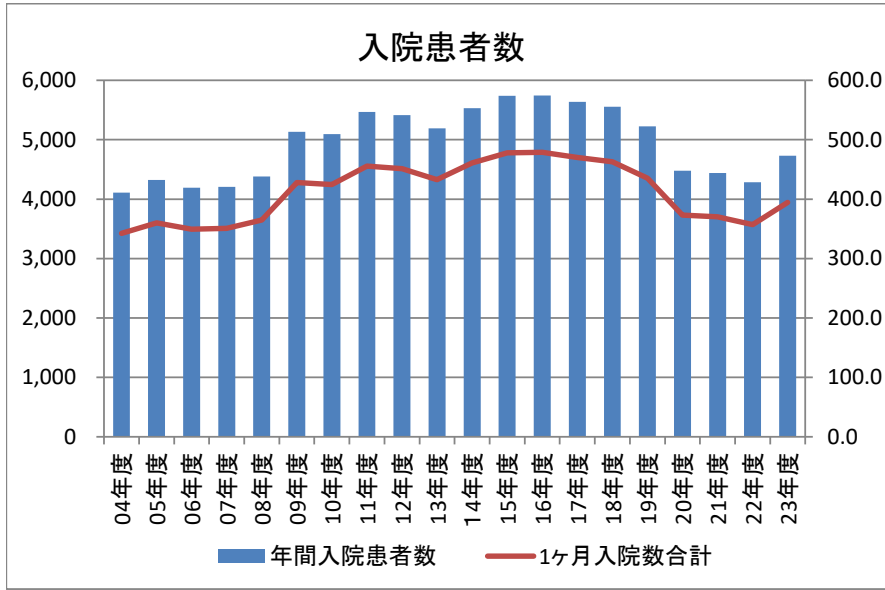
## 外来患者数

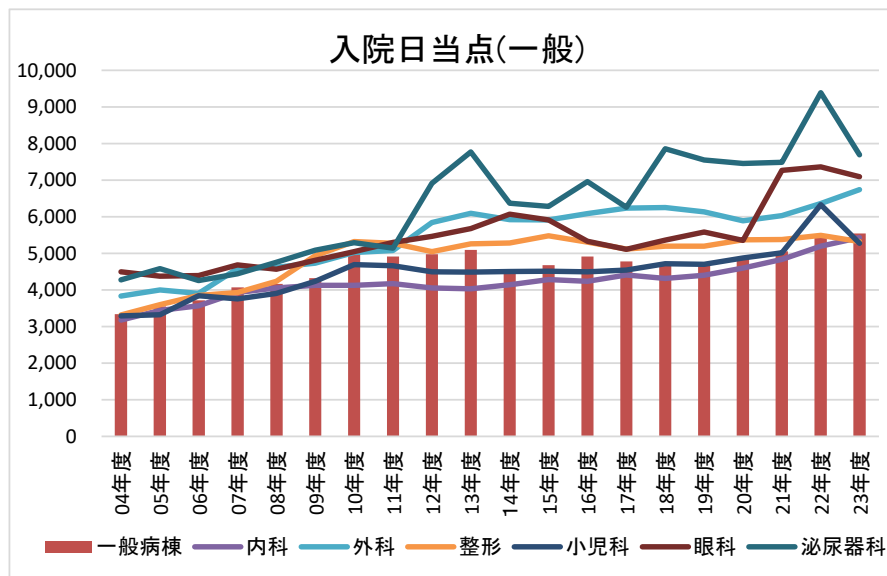
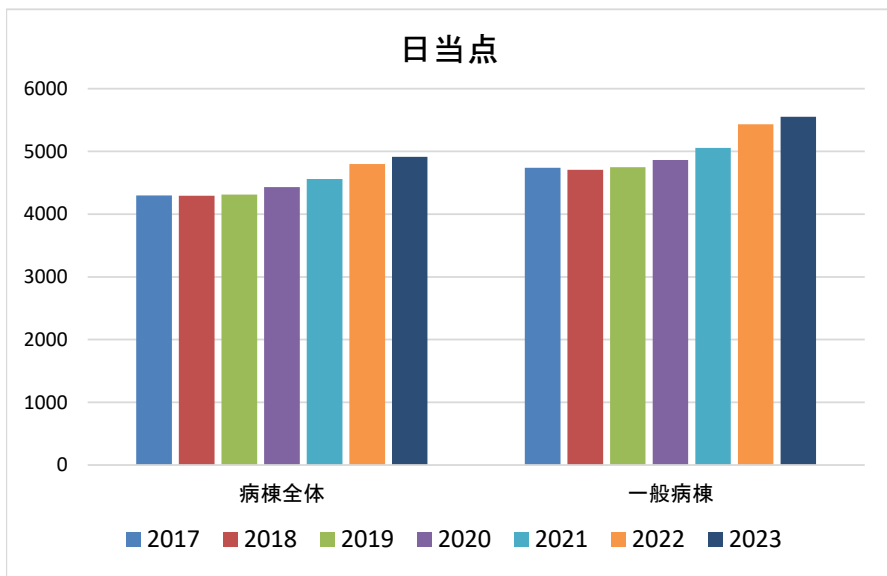
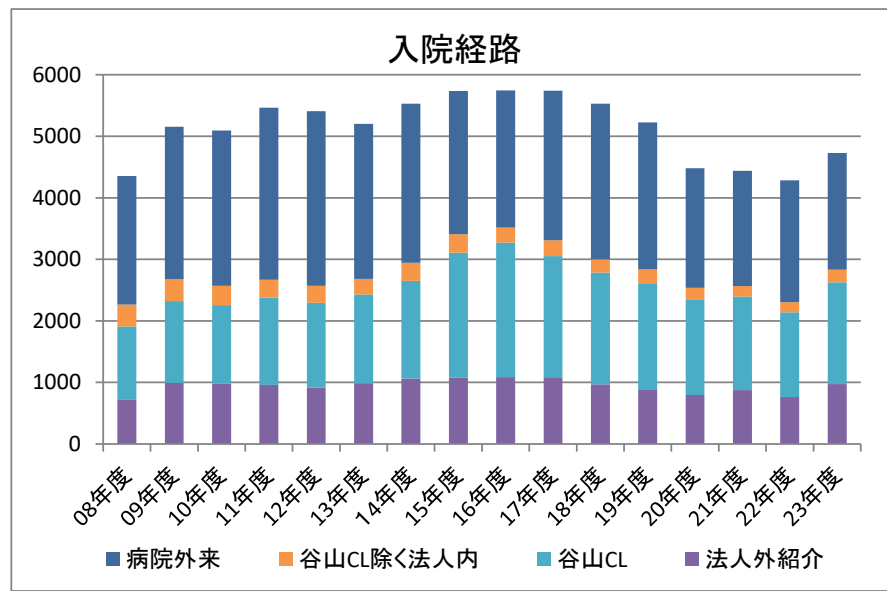
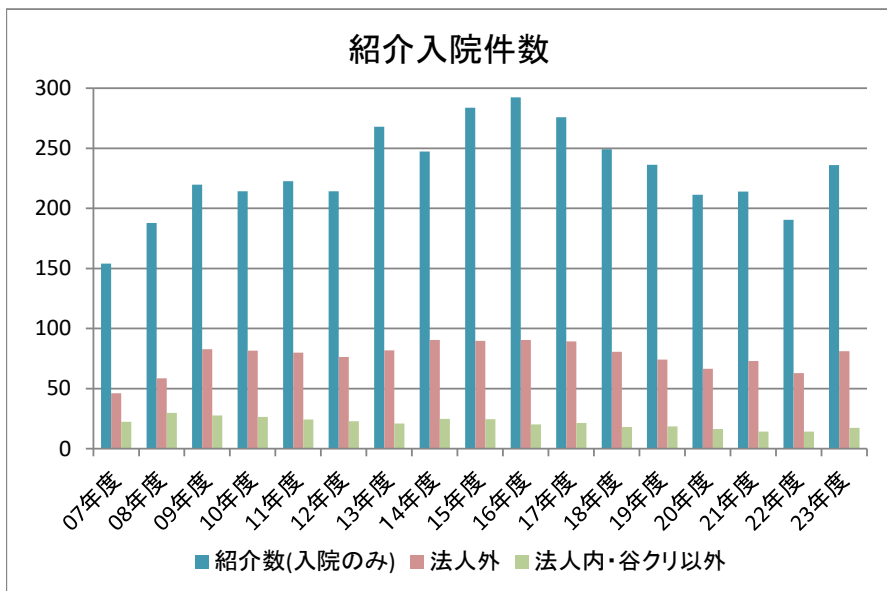




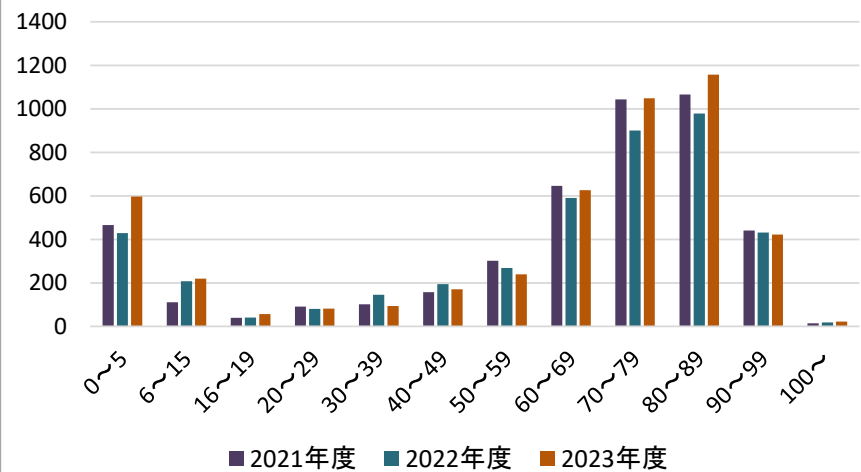




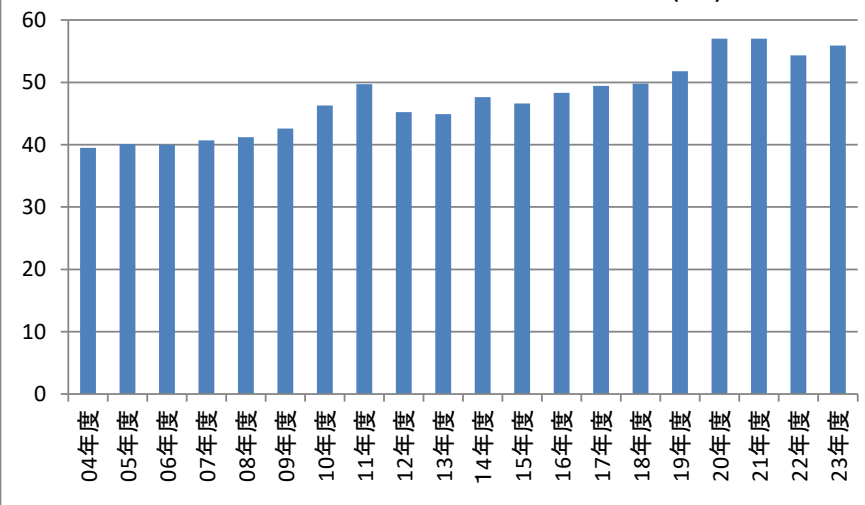


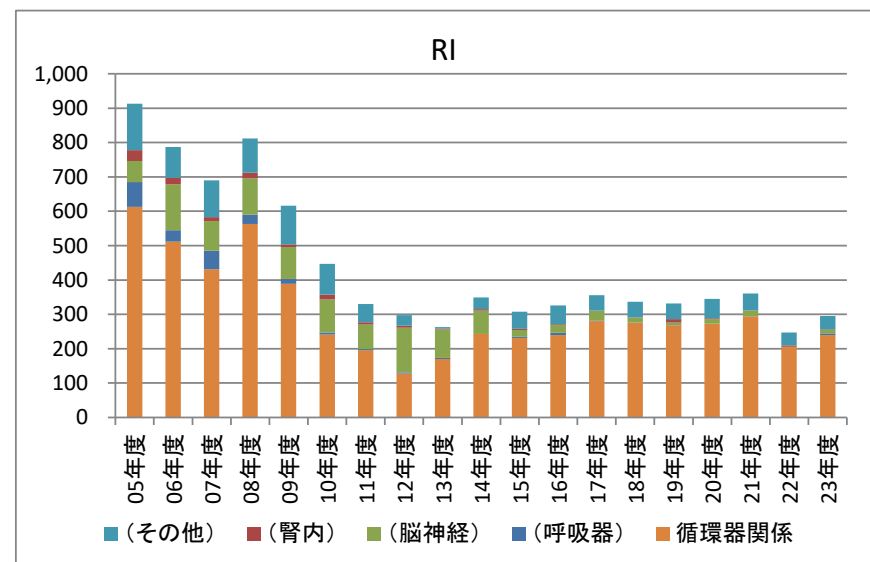
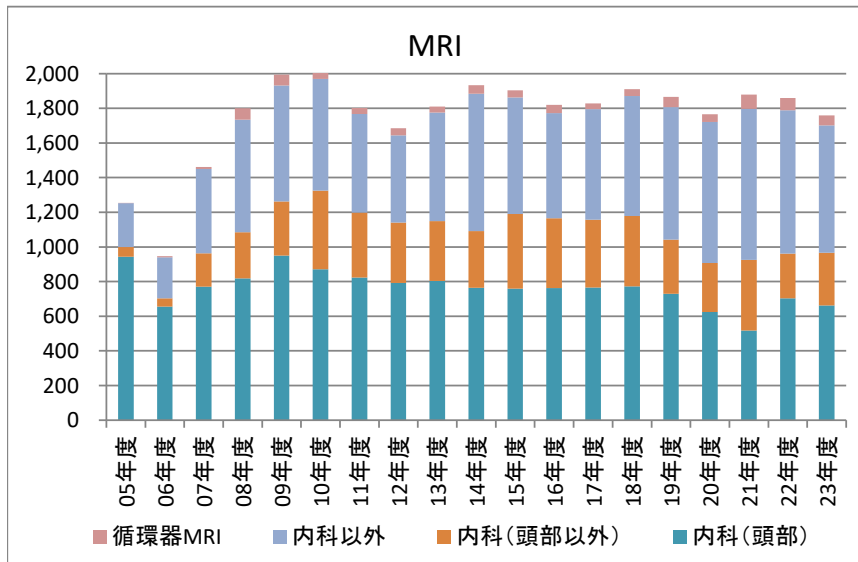
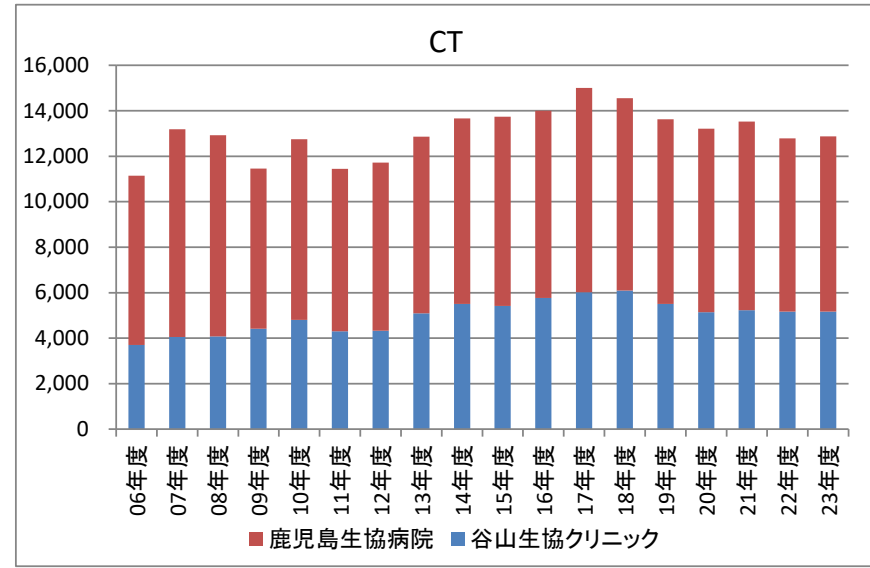
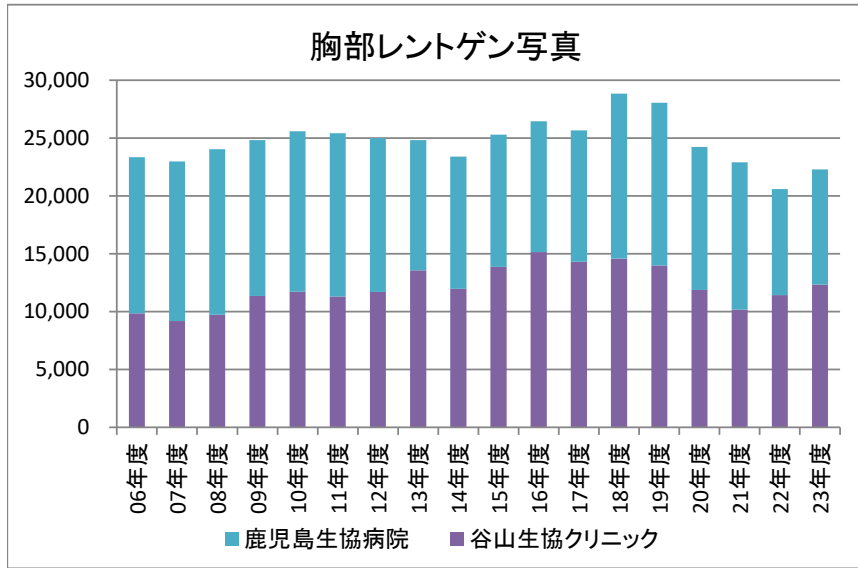


年齢別患者数

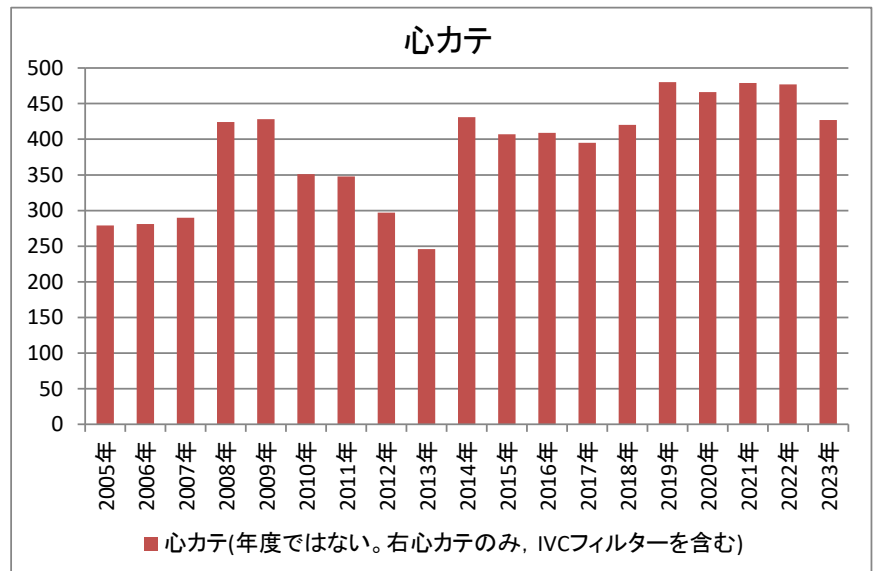
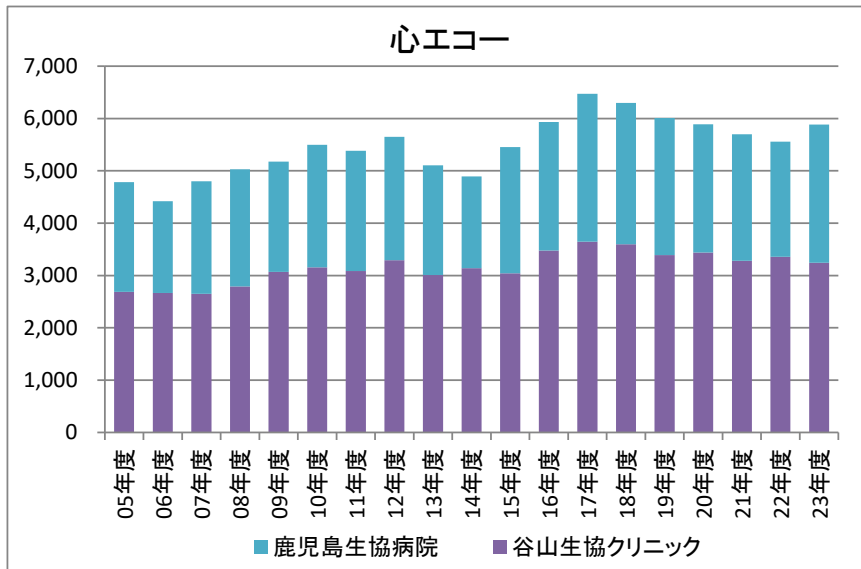
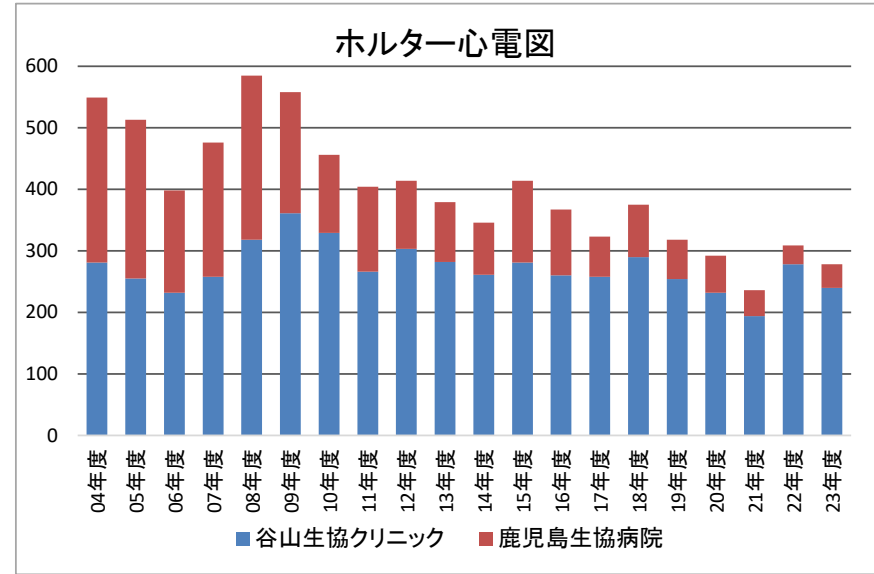
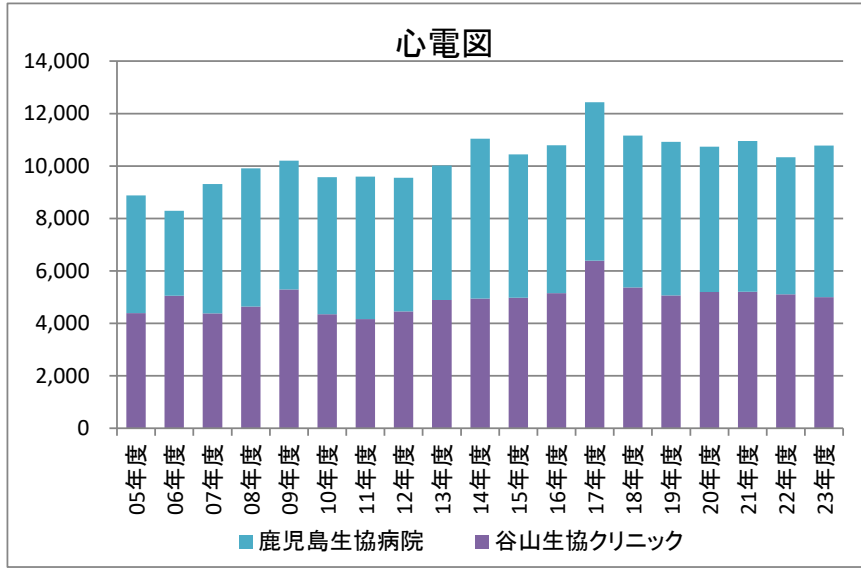


入院件数に占める70歳以上の割合 (%)

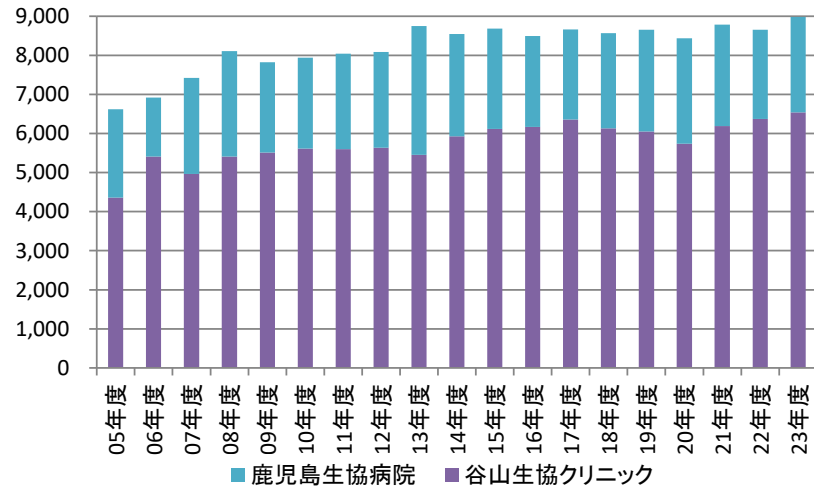




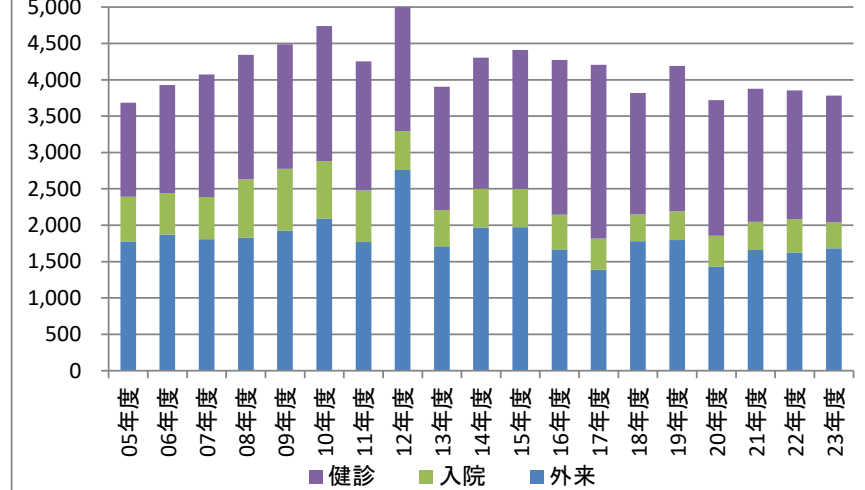




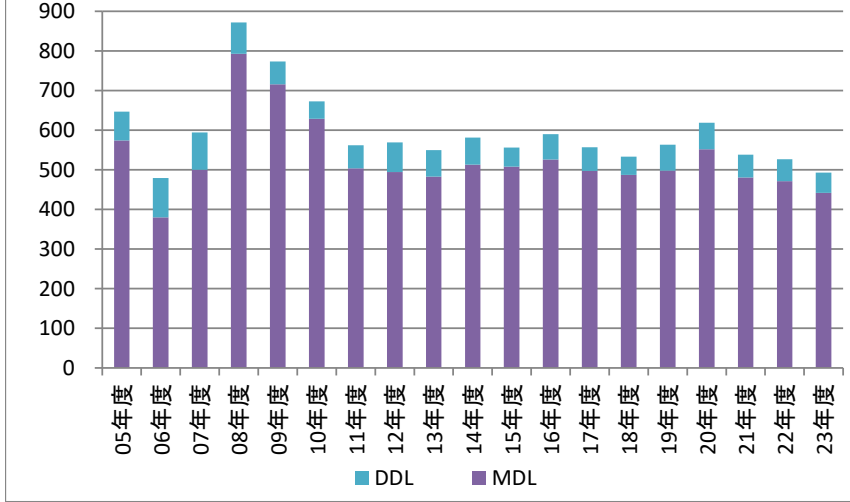
腹部エコー



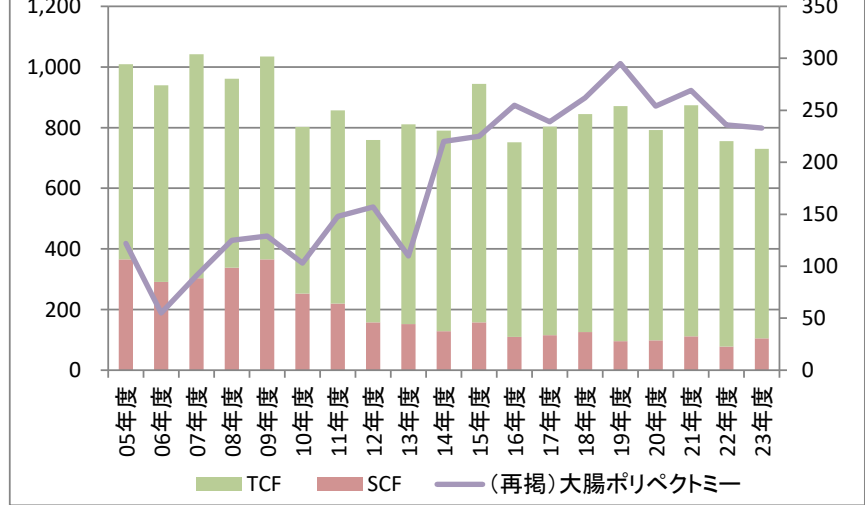
上部消化管内視鏡

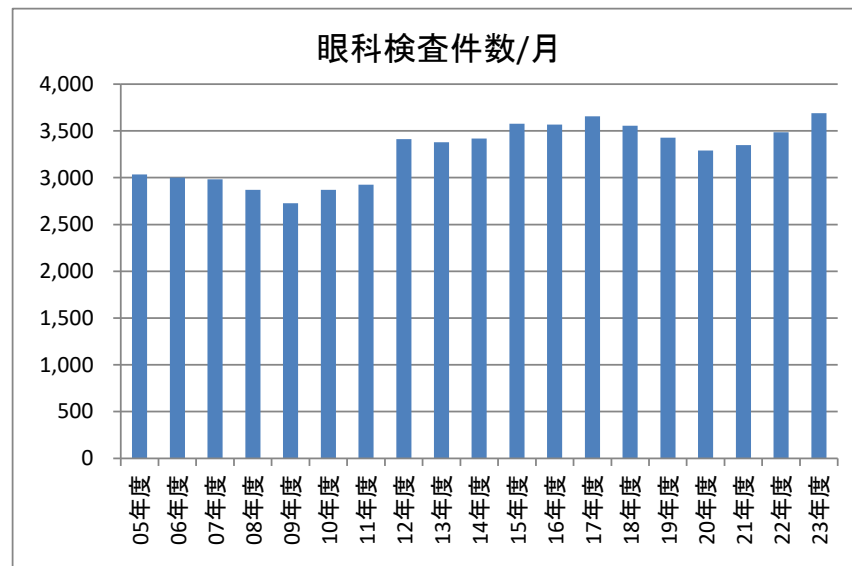
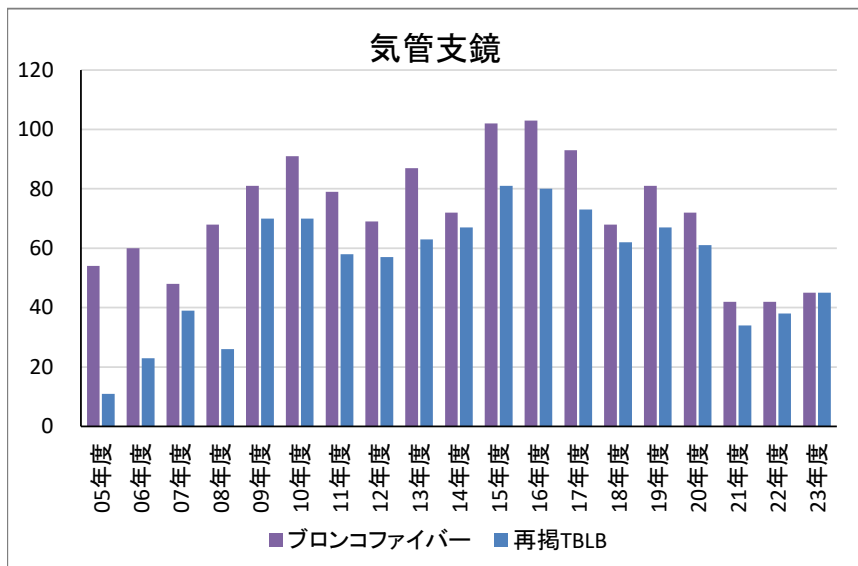


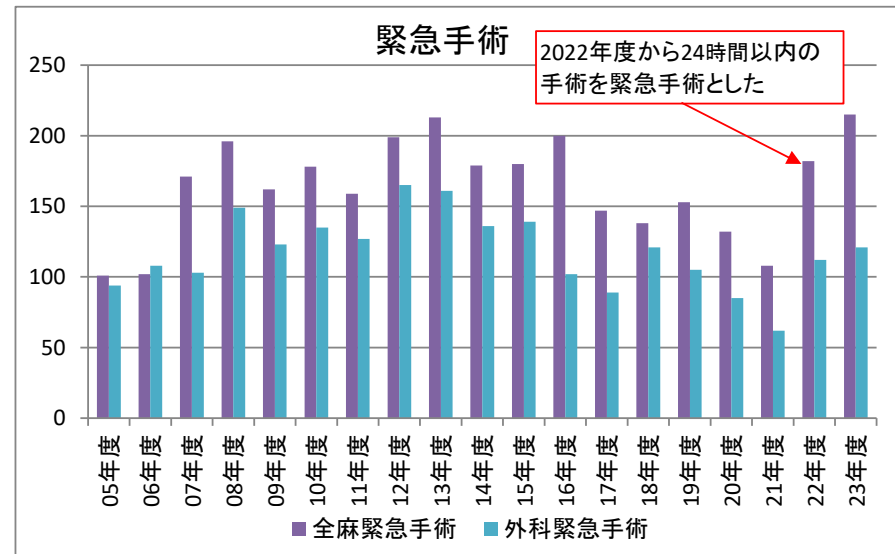
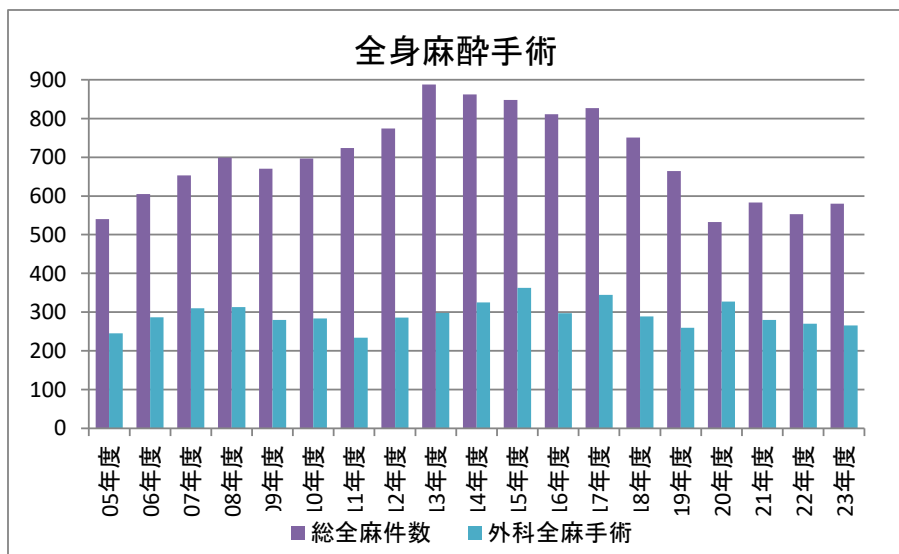
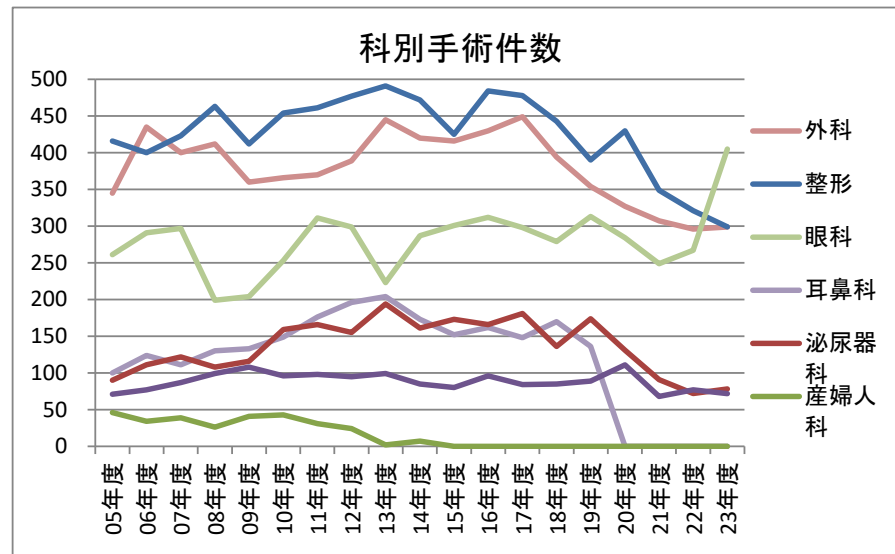
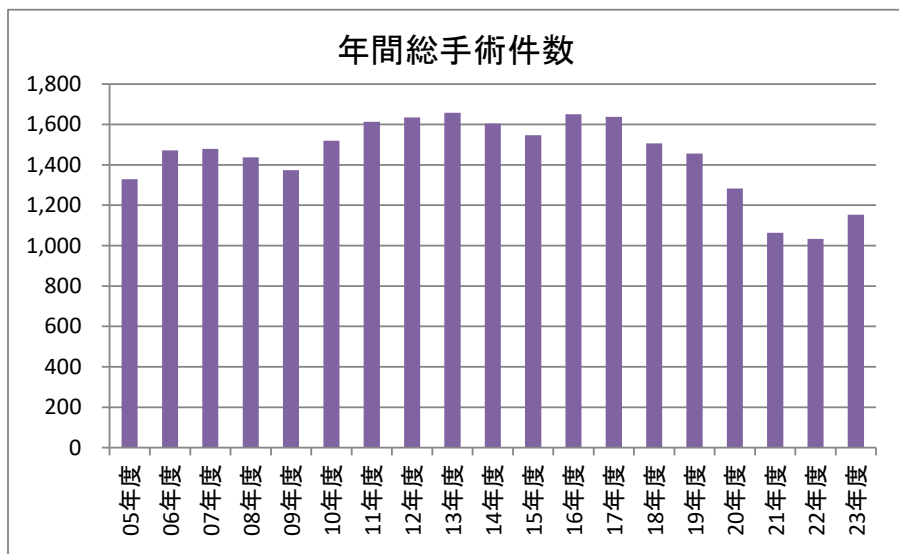
消化管造影

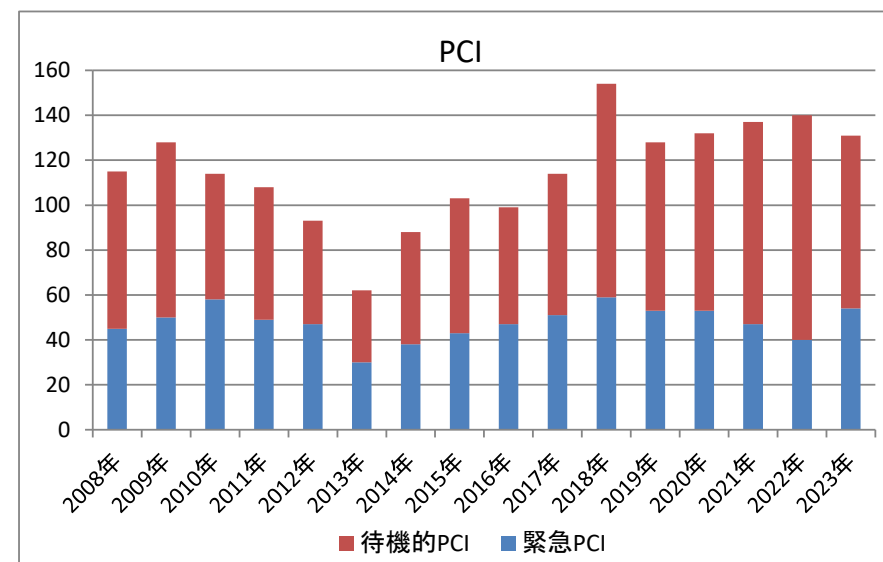
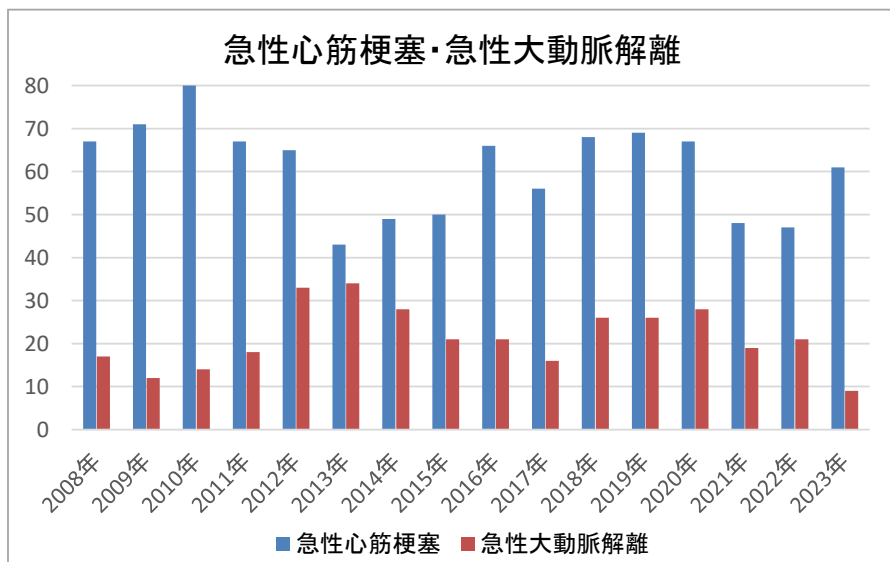
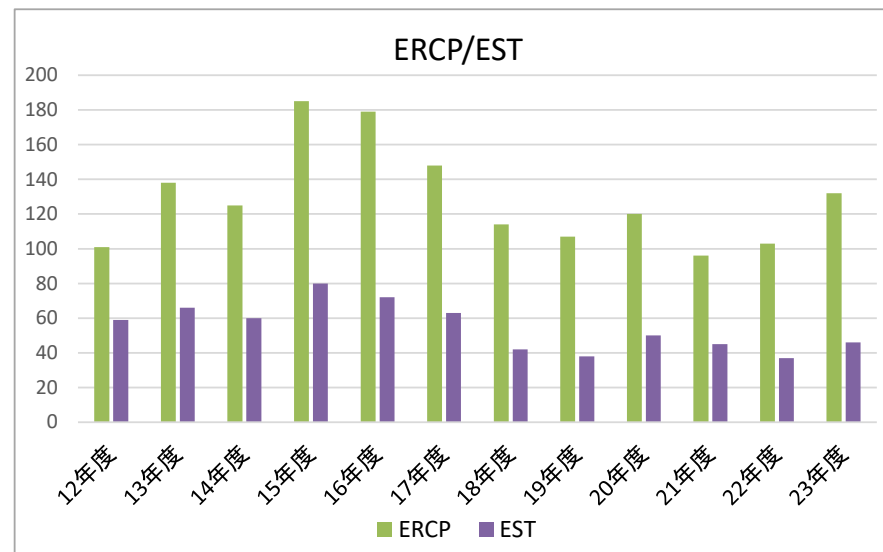
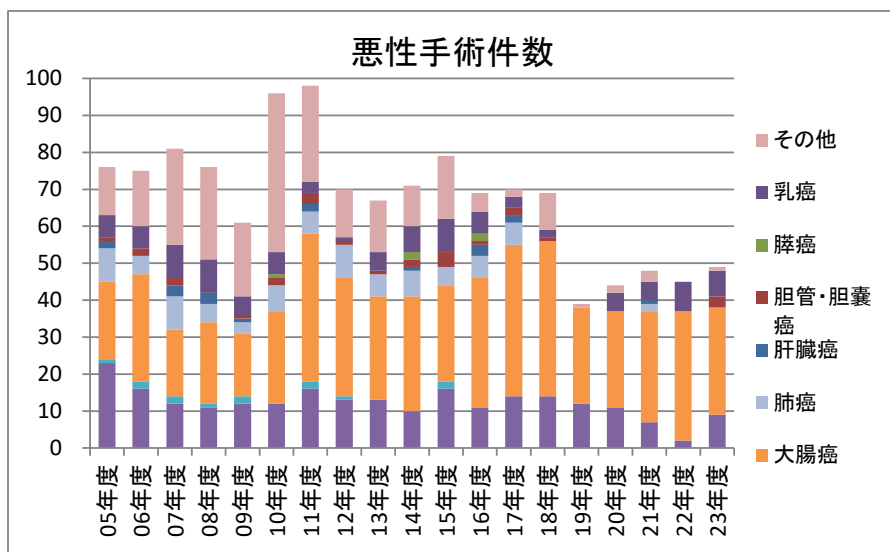


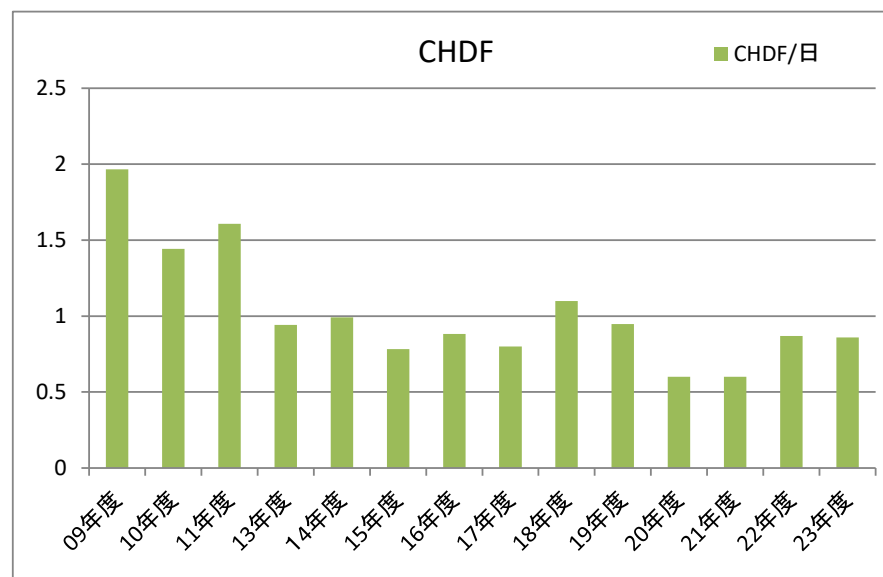
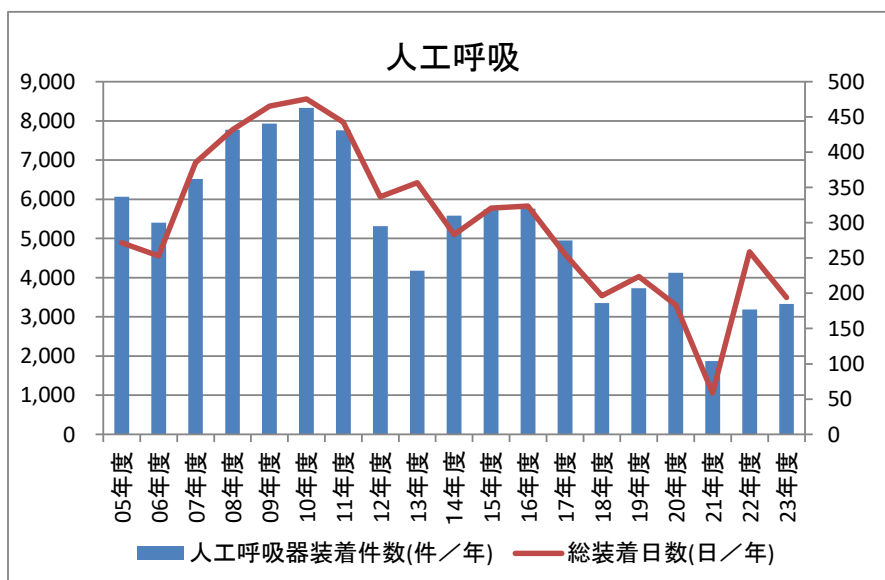
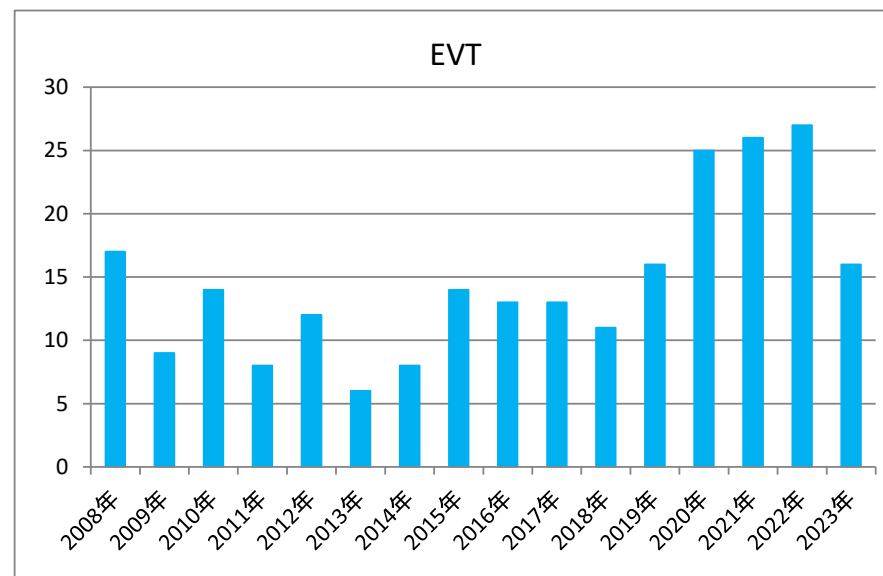
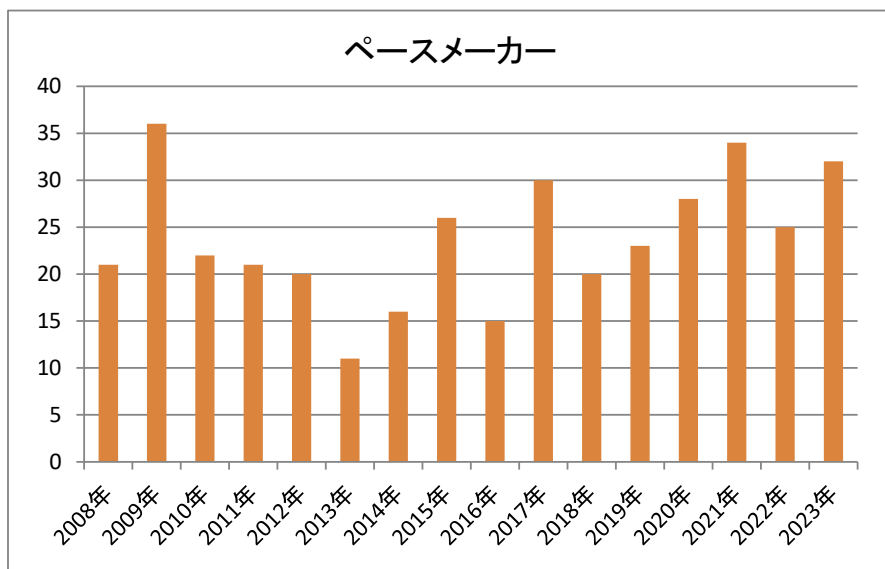
下部消化管内視鏡

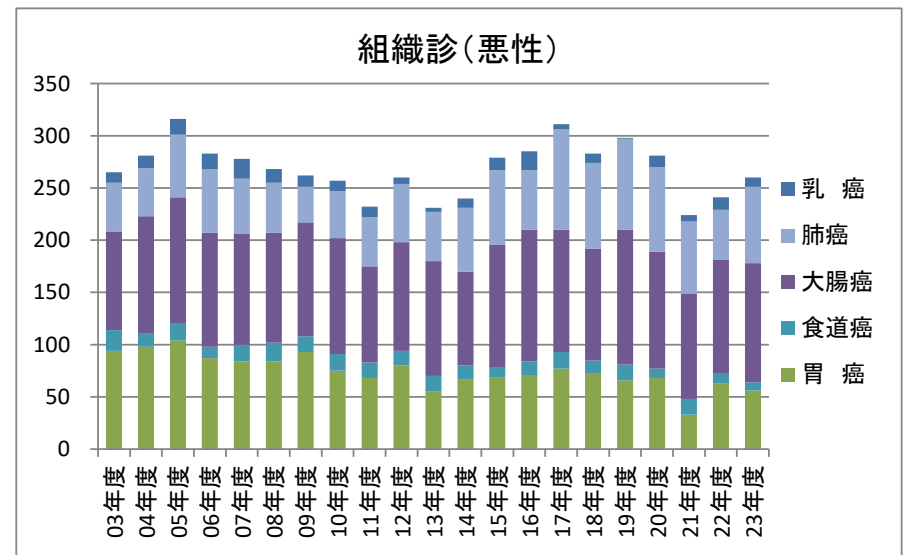
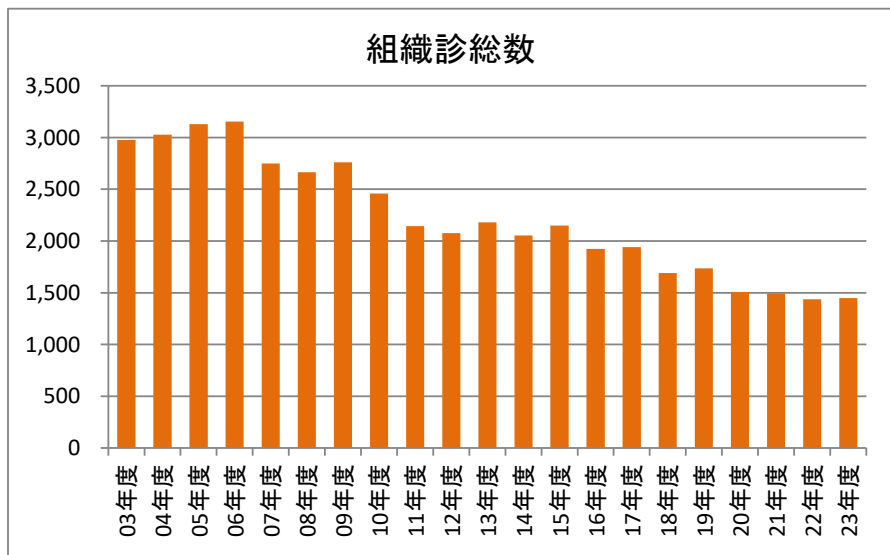
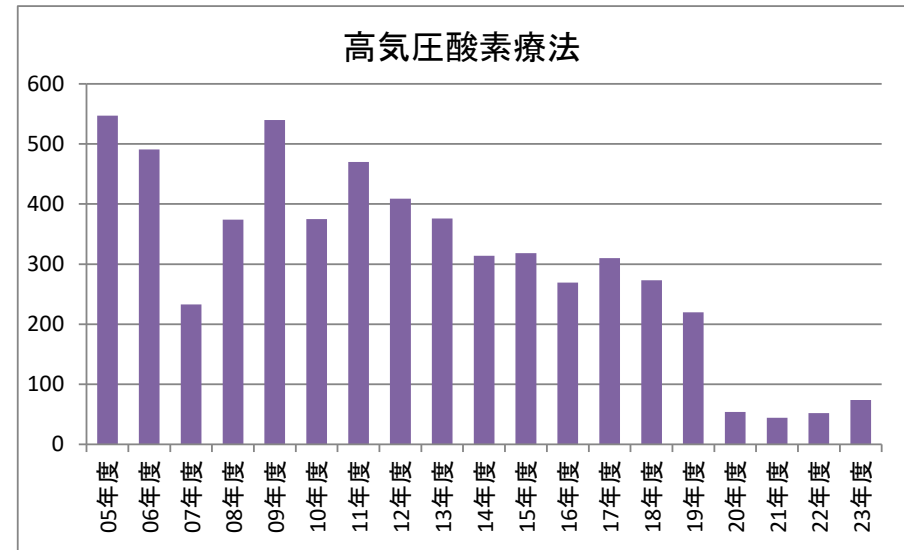
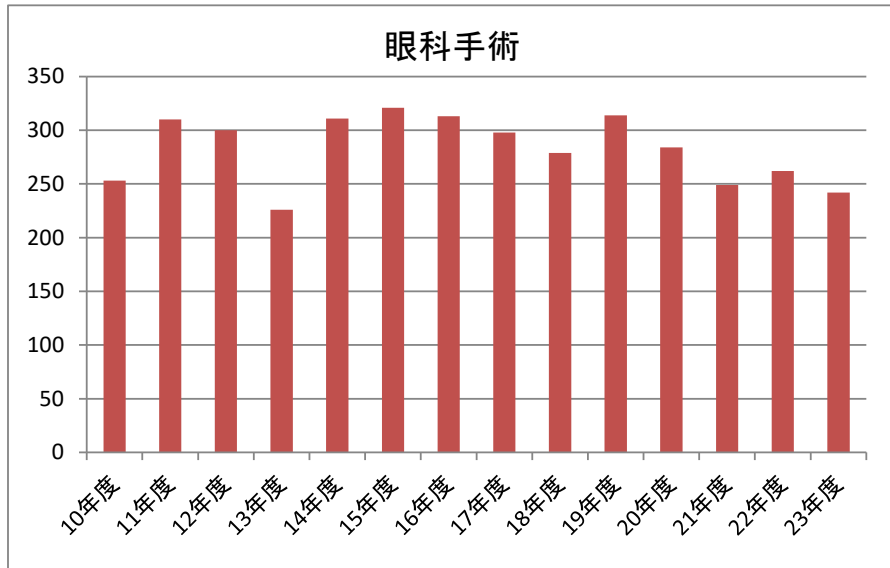




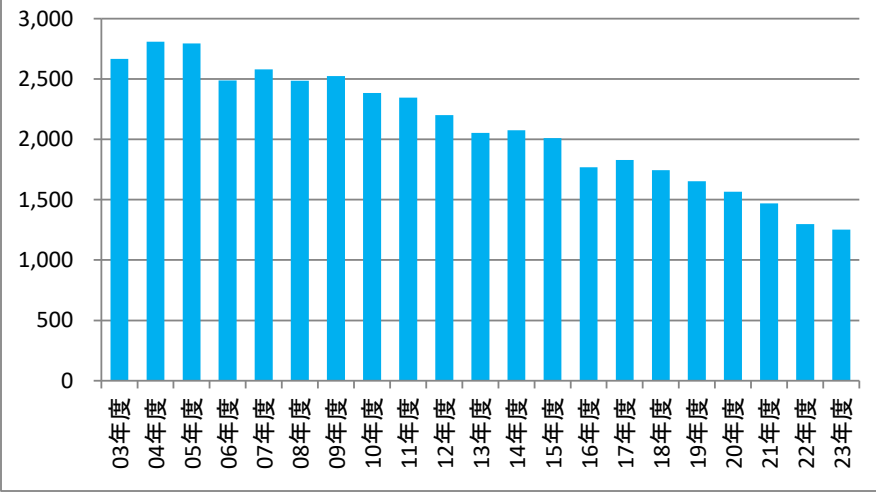




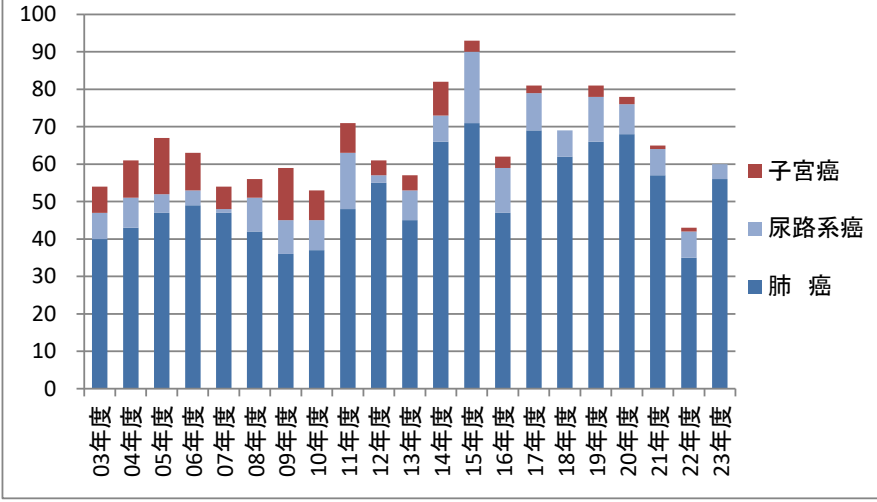




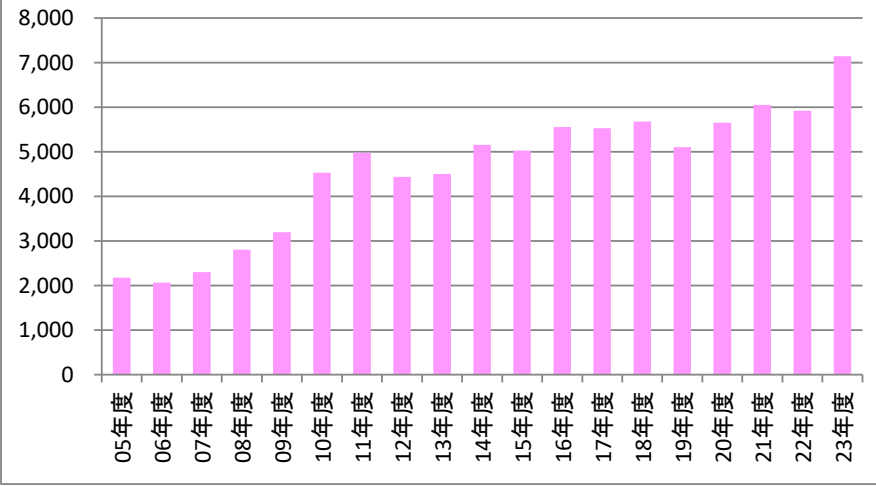
細胞診総数



細胞診(悪性)



服薬指導



食事指導

